

BRENT H. FUCHS AUCTIONEERING

ESTATE AUCTION SAT., JUNE 28th, 9:30 AM & SUN., JUNE 29th, 12:00 NOON SHELBYVILLE, INDIANA

SALE LOCATION: 1.5 MI. N. OF SHELBYVILLE ON STATE RD. 9 TO 425 WEST. WATCH FOR SIGNS. (Located 20 mi. S.E. of Indianapolis on I-74.)

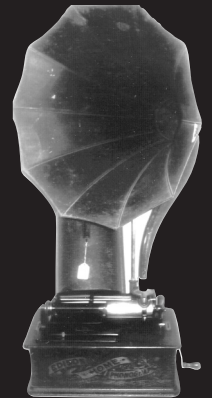
SATURDAY, JUNE 28th

ANTIQUe FURNITURE: Victorian hall tree (walnut, nice), parlor table, game table, oak drop-leaf table, oak library table, ball & claw side table, multidrawer store cabinet, floor lamps, mirrors, rockers, trunk, fireplace mantel, fern stands, etc. **GLASSWARE AND CHINA:** Cut glass, Nearcut, early English tea set, h.p. Germany, stretch glass, Carnival, Depression, Oriental, compotes, cake stands, cruet set, shaving mugs, calendar plates, set Presidential plates, pressed, pattern, complete set Haviland, 15+ pieces Tea Leaf ironstone, many other pieces too numerous to mention (excellent condition). **BOOKS, BOOKS, AND MORE BOOKS 1,000+**, too many to list. **CAST-IRON** fencing with gate. **FISHING REELS** (early). **PRIMITIVES:** Butter molds, bottles, crocks, churns, tins, yellowware, stoneware, bentwood & Dazey churns. **PRINTS, PAINTINGS,**

ETCHINGS & FRAMES, i.e. 40 Steve Hall prints. **EARLY LIGHTING:** Victorian cranberry hanging light, kerosene lamps, betty lamp, banquet, slag, sev. individual various shades. **40+ POLITICAL** pinback buttons (early & nice). **COINS:** Penny collection, uncut \$2 mint sheet, commemorative sets. **KLU KLUX KLAN** membership card, Klu Klux Klan brass pendant. **PENDANTS:** 30+ (early). **JEWELRY:** Costume, sev. nice pieces, rings & watches. **BUTTONS:** Button collection, sev. unusual. **CHILDREN'S:** Marx complete train set, Roy Rogers & Hopalong Cassidy cap guns, sev. board games. **SHELBYVILLE-SHELBY COUNTY** memorabilia: 40+ SHS Squibs i.e. 1909-1950s, postcards, early photos. 10+ **CLOCKS** see website, including Russian sub clock – modern grandfather. **GENEALOGY:** Mr. Gordon researched genealogy for many years. There are too many reference books to list: Shelby, Rush, and many other counties; included equip. – Rykon Reader, microfische, Cannon copier. **MODERN FURNITURE:** Howard Miller grandfather clock, glass front china cabinet (nice), sofas, end tables, lamps, desk, misc. outdoor furn., washer/dryer, freezer (partial listing). **AUTO-MOBILES:** 1989 Lincoln Towncar, silver – loaded, 90K miles (nice car, truly the last of the big ones), '96 Chrysler Sebring Convert, green w/tan top, 100K miles, good cond. (to sell at 1 PM).

SUNDAY, JUNE 29th

REGINA COIN-OP MUSIC BOX: Oak tabletop mod., excellent cond. (coin-op nonworking), plays beautifully, 50+ 15½" metal discs (great assortment, many Reginas). **PHONOGRAPHS – CYLINDER PLAYERS:** This collection has been forgotten for 30+ years: **REPRODUCTION: Edison Tin Foil Phonograph** (thought to be Kreusi Model 30), **Columbia** disk phonograph, **Victor Talking Machine Co.**, **Columbia** disk phonograph, **Edison** Home Model A w/cygnnet horn, **Pathe** disk phonograph, **Edison** disk phonograph "Chippendale", **Talk-O-Phone (Ennis)**, **Edison** Home Model B, 2 **Edison** Standard Model B, **Columbia** cylinder phonograph Type BF, **Columbia** cylinder phonograph type AZ, **Victrola** "credenza", **Silvertone** upright disk phonograph, **Columbia** "Vivatova", **Columbia** "Regent" desk phonograph, **Victrola** VV260, other related – large brass belled horn, black papier-mache horn, sev. lots of Edison, phonograph & music-related items. **10,000? RECORDS – 750 CYLINDERS,** several thousand Victor, pre-1940 of numerous artists & manufacturers including (approx. 20 Victor 5200 Series), several others including Little Wonders 45's, LP's. **5,000+ POSTCARDS COLLECTION** i.e. advertising, aircraft, animals, blacks, Christmas, disasters, expositions, farming, fire dept., flowers, **Follies, hold-to-the-light,** Indians, leather, Lincoln, **mechanical,** military, political, presidents, pretty woman, religious, ships, **silks,** state capitals, street scenes, trains, transportation, Washington, War-WWI (all holidays including Halloween). **PAPER COLLECTION:** Advertising (several categories not listed), documents, photos, programs (i.e. sporting events), maps, photos, tix, MAD, early Playboys, (too many lots to list), plain card collection, sev. 1st edition stamps. **LONG GUNS:** Remington Model 31 12 ga., Winchester Mod. 12 12 ga., Remington Mod. 6 32 cal., Of Mossberg Mod. 640K w/scope, Erma Erfurt Mod. 98 22 cal., Connecticut Valley Arms 50 cal. half stock Ky. rifle, Jukar Spanish 45 cal. full stock Kentucky rifle. **HAND-GUNS:** Colt 22 revolver Frontier Scout, Smith & Wesson Mod. 19 357 mag., Italian 44 cal. muzzle-loading revolver Navy Model, Jennings Firearms Mod. J-22 22 cal. **INDIAN ARTIFACTS:** Pendant, gorget, axes & points. **POCKETKNIVES** i.e. office, Case, Hopalong Cassidy, etc.



ROBERT GORDON ESTATE • Marjorie Roberts, Executor
*AUCTIONEER'S NOTE – This is one of the finest estates we have had the privilege of offering. This is only a partial listing. See complete listing at www.brenthfuchs.com

Plan to spend the weekend with us, motels nearby. On-site sale held under tents – Lunch served.
No sales tax – No buyer's premium. Guns to be sold in accordance to IN law.
Not responsible for accidents.

BRENT H. FUCHS – AUCTIONEER, AUC1044390 • 317-432-4013

